



INSTALLATION INSTRUCTIONS

SEGWAY

FUGLEMAN

CARGO BED COVER



SAFETY INSTRUCTIONS

READ PROPERLY COMPLETE ASSEMBLY INSTRUCTIONS BEFORE STARTING OF ASSEMBLY

Warning: Failure to heed all safety and operating instructions and warnings regarding use of this product can result in serious bodily injury.

Install all parts indicated in assembly instructions. Failure to fully assemble product before use could result in personal injury.

Assembly of product requires use of hand or power tools. If you are not experienced in using these types of tools, have product dealer do the install for you.

Some parts contain sharp edges, wear protective gloves if necessary. Always keep your assembly area clean, uncluttered and well lit.

Keep visitors and children a safe distance away from the assembly area. Visitors should wear the same safety equipment described under.

Never operate your UTV with the cab doors open. Failure to properly latch the doors before moving the vehicle could result in serious injury.

Dress for safety. DO NOT wear loose clothing, gloves, neckties or jewelry if using power tools to assemble this product. Insert all nut covers after you finish installation.

Never drive your UTV with the cab front window in open position.

MAINTENANCE AND CLEANING

To clean polycarbonate surface use soapy water solution or other subtle means.

Dirt and dust wash by gently water stream and swipe only with wet or damp means in the direction from top to bottom.

The recommended frequency of cleaning of polycarbonate part is about 1 time per month or according to the actual degree of pollution.

Do not use detergents that could scratch the surface plates (abrasives, harsh fabrics, etc.).

Do not use solvents or alkaline detergents or cleaners with ammonia (ammonium hydroxide).

Do not remove the impurities from the surface of the razor blades or other sharp items.

Do not clean cabin, when the polycarbonate plates are heated by the sun.

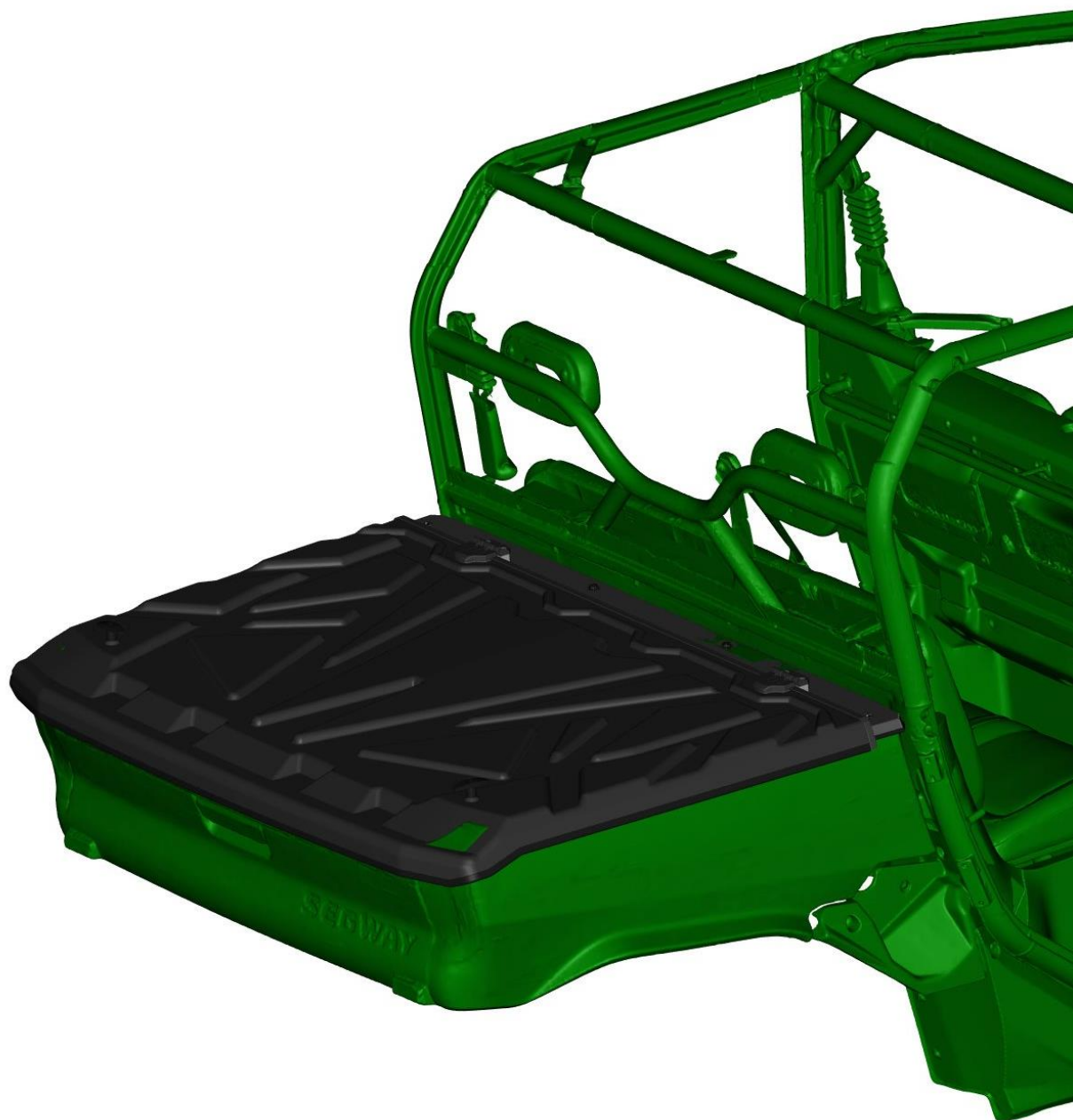
Do not use the squeegee. It could be scratched surface plates.

Do not clean the water current strength greater than 50 bar (WAP).

The manufacturer is not responsible for scratching the surface in case of failure to comply with the above instructions.

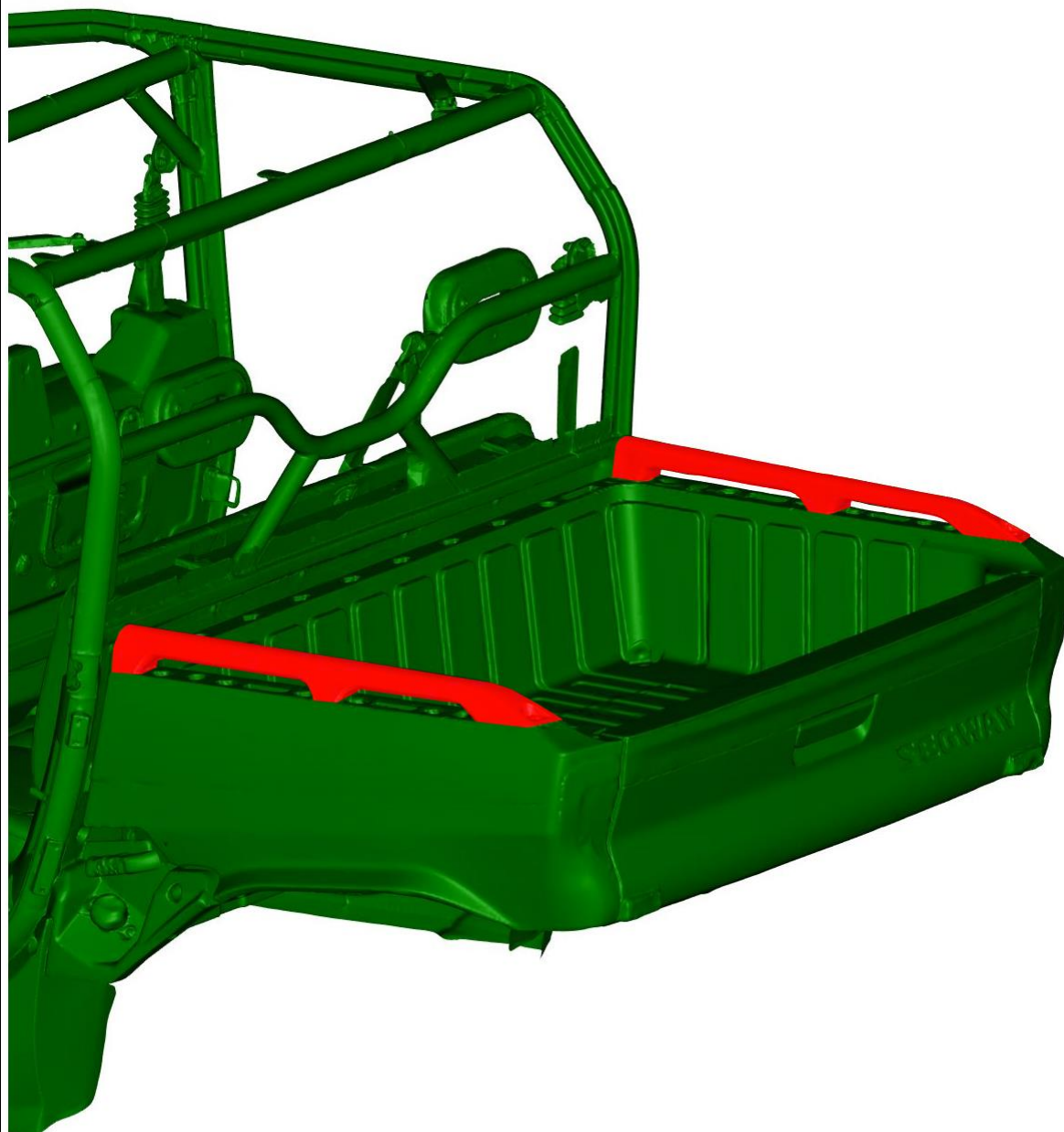
All bolted connections of cab must be by user at regular intervals checked and tightened.

It is necessary to check the air filter of the heater regularly, depending on the dust environment in which the vehicle is operated.

PREVIEW

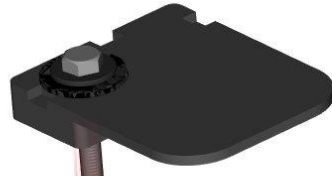
4

Remove both handles on the cargo space.



5

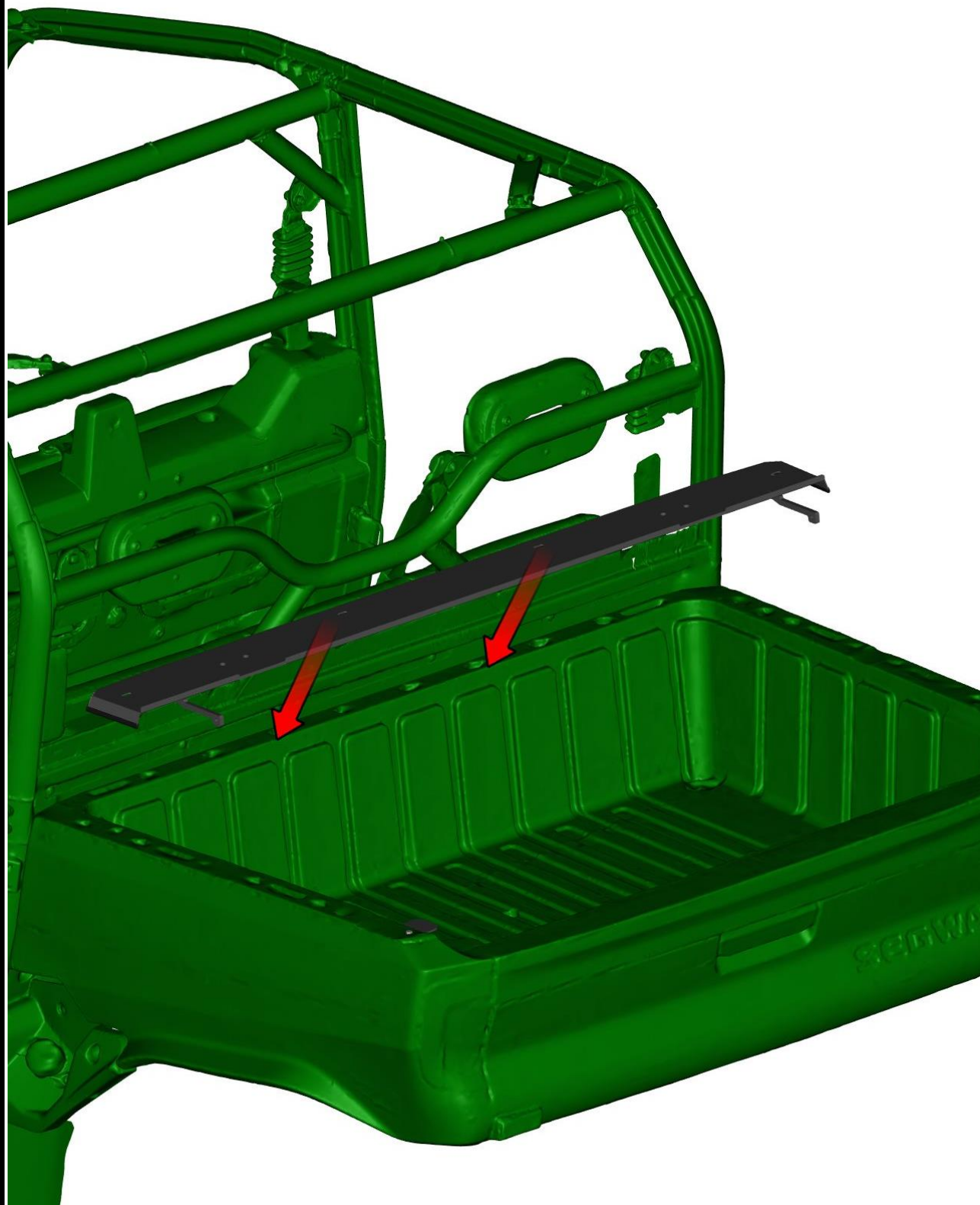
Place lock stop into the original hole and fix it with included fixing kit on both sides.



6



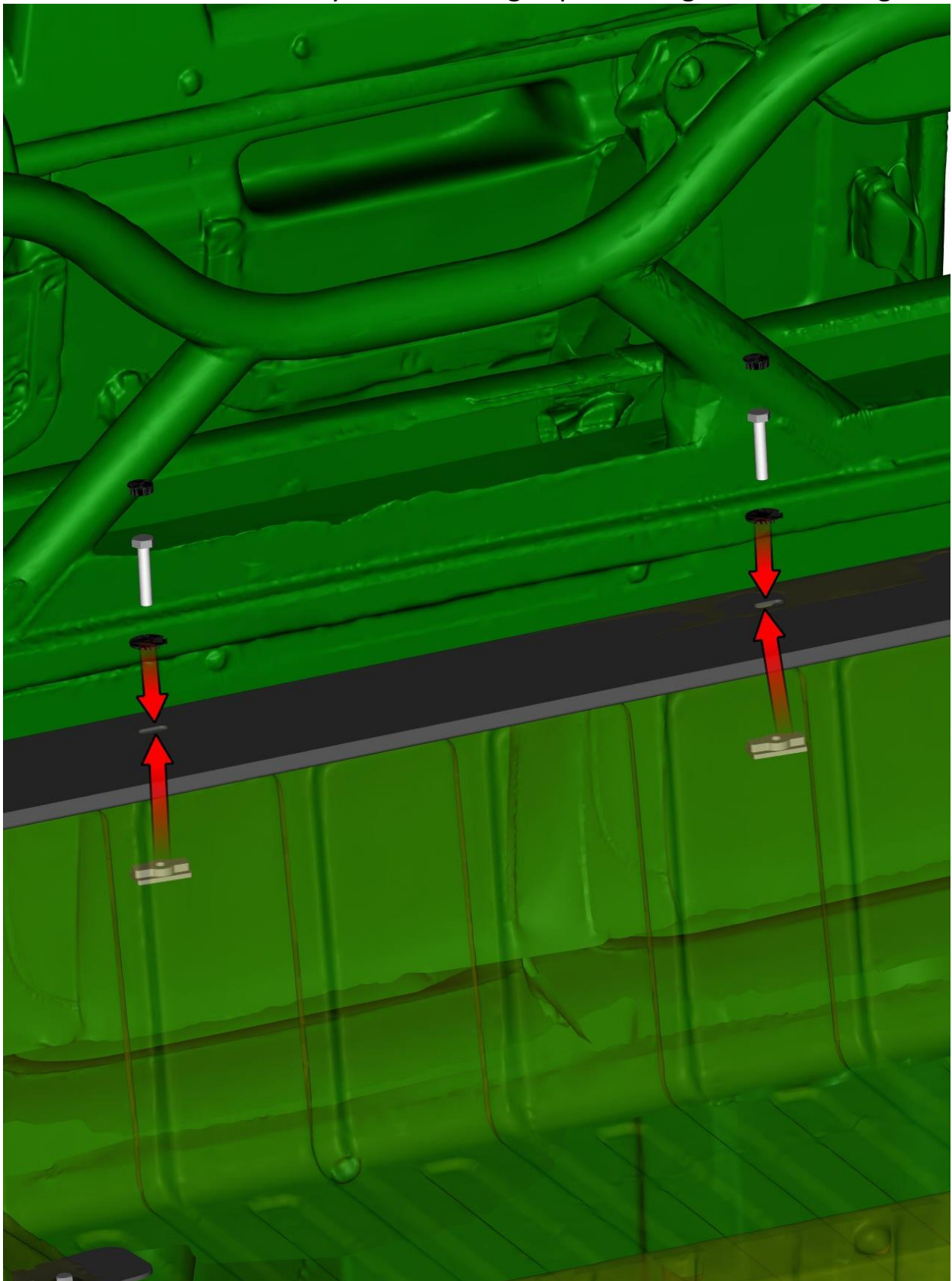
Place covers base assembly to the very front in accordance with the holes.



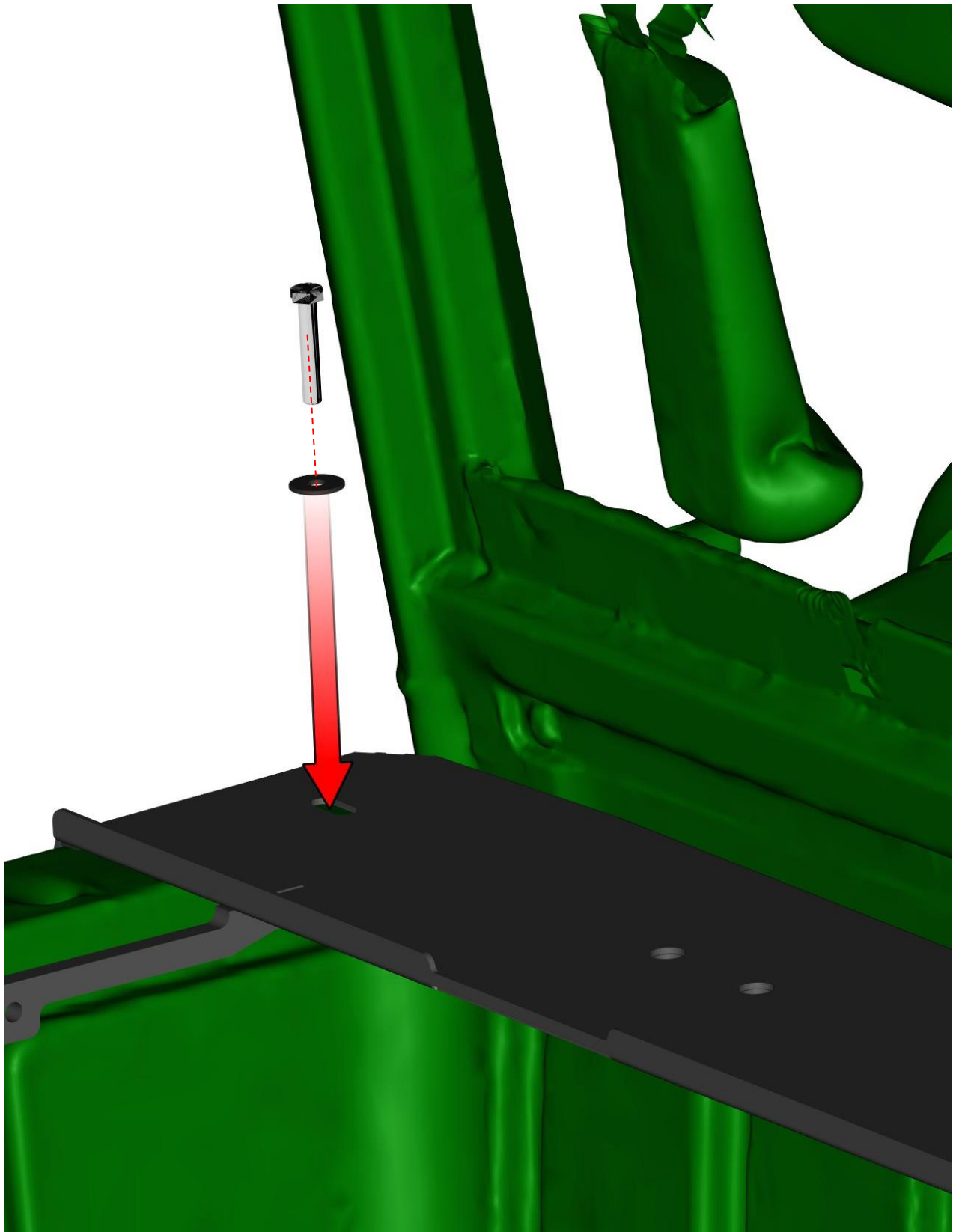
7

Fix cover's base assembly with the cargo space using included fixing kit.

8

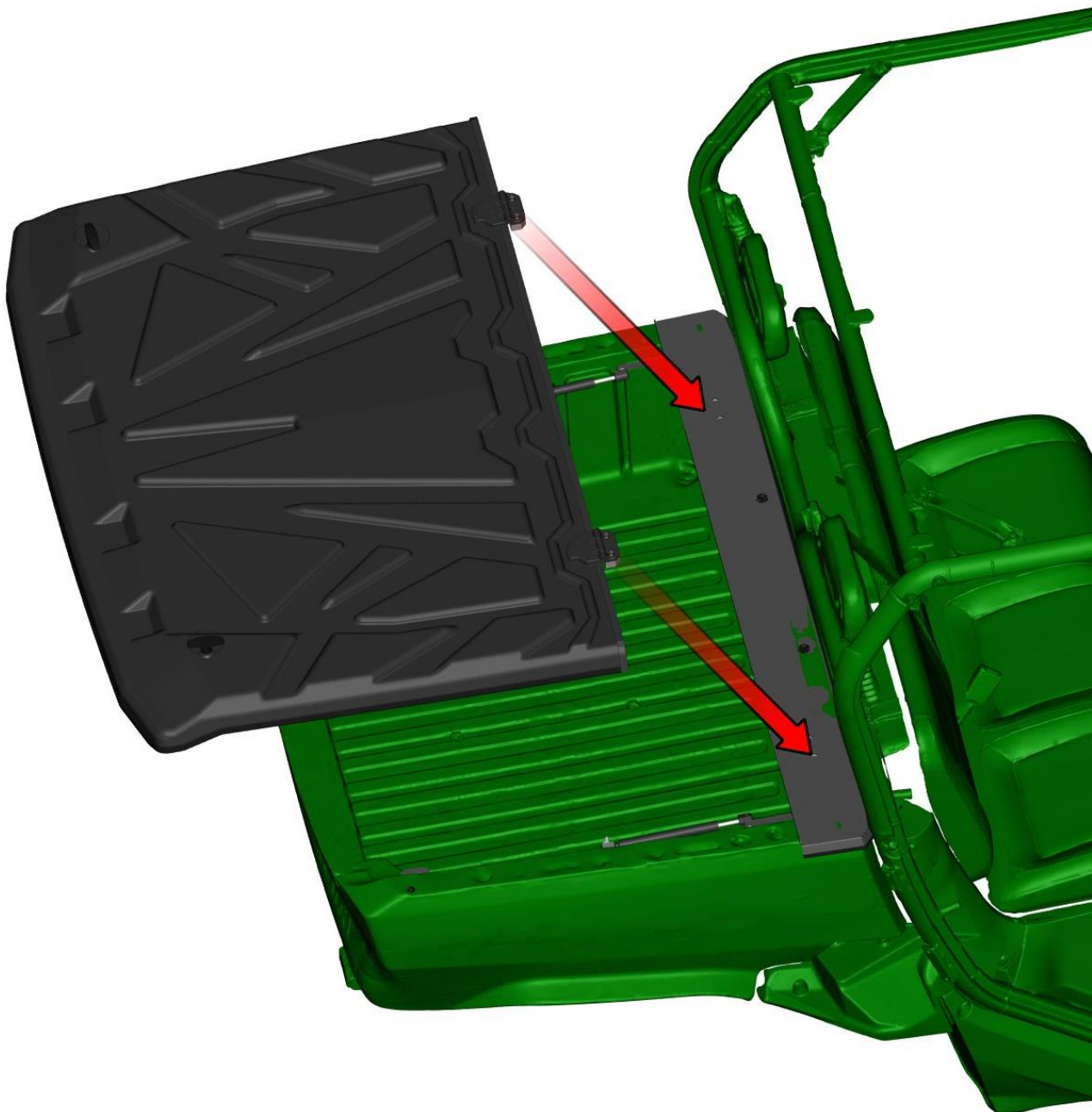


Fix cover's base with cargo bed onto original hole using included fixing kit on both sides.

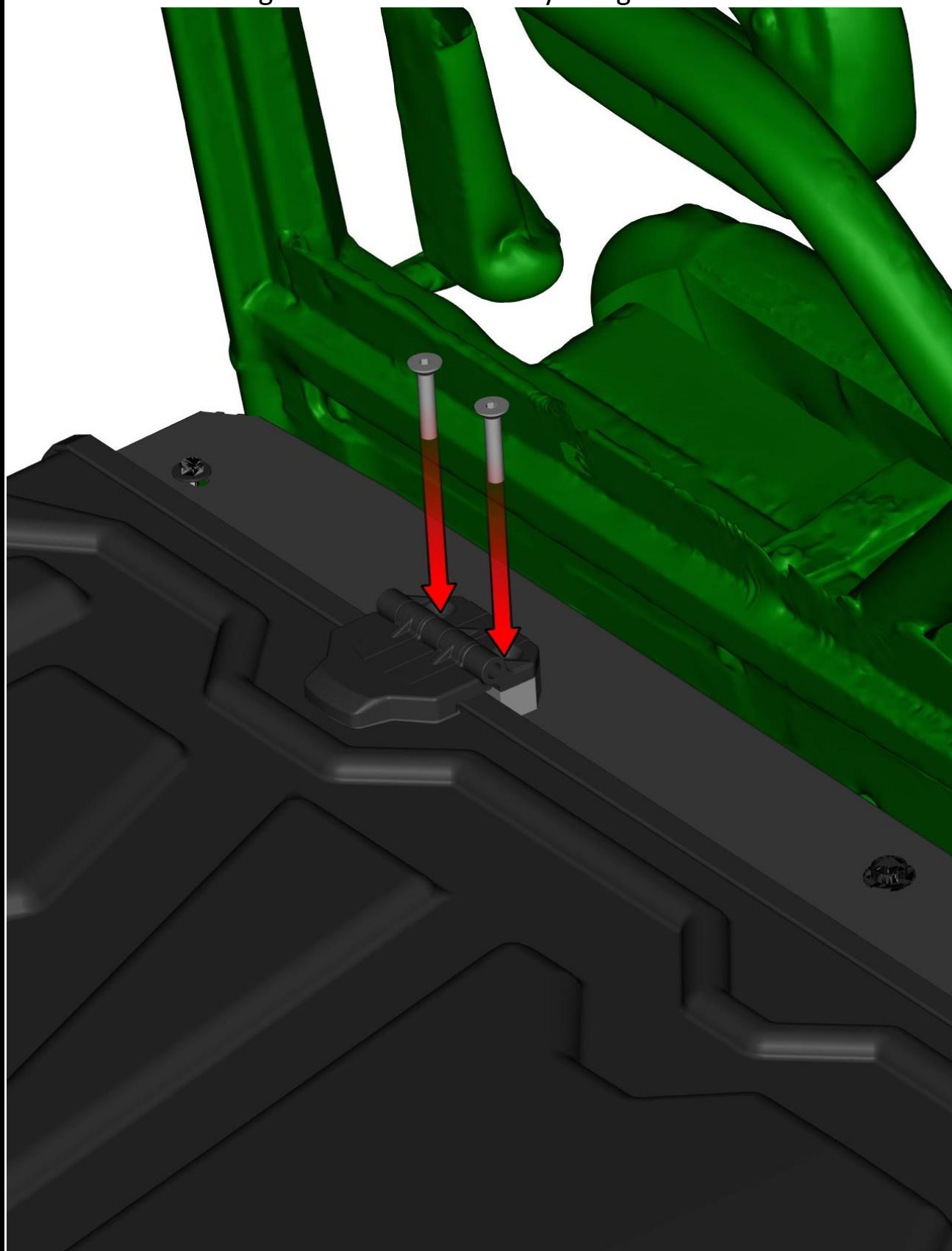


9

Place cargo bed cover onto the cargo bed in accordance with holes for hinges on to the base assembly.

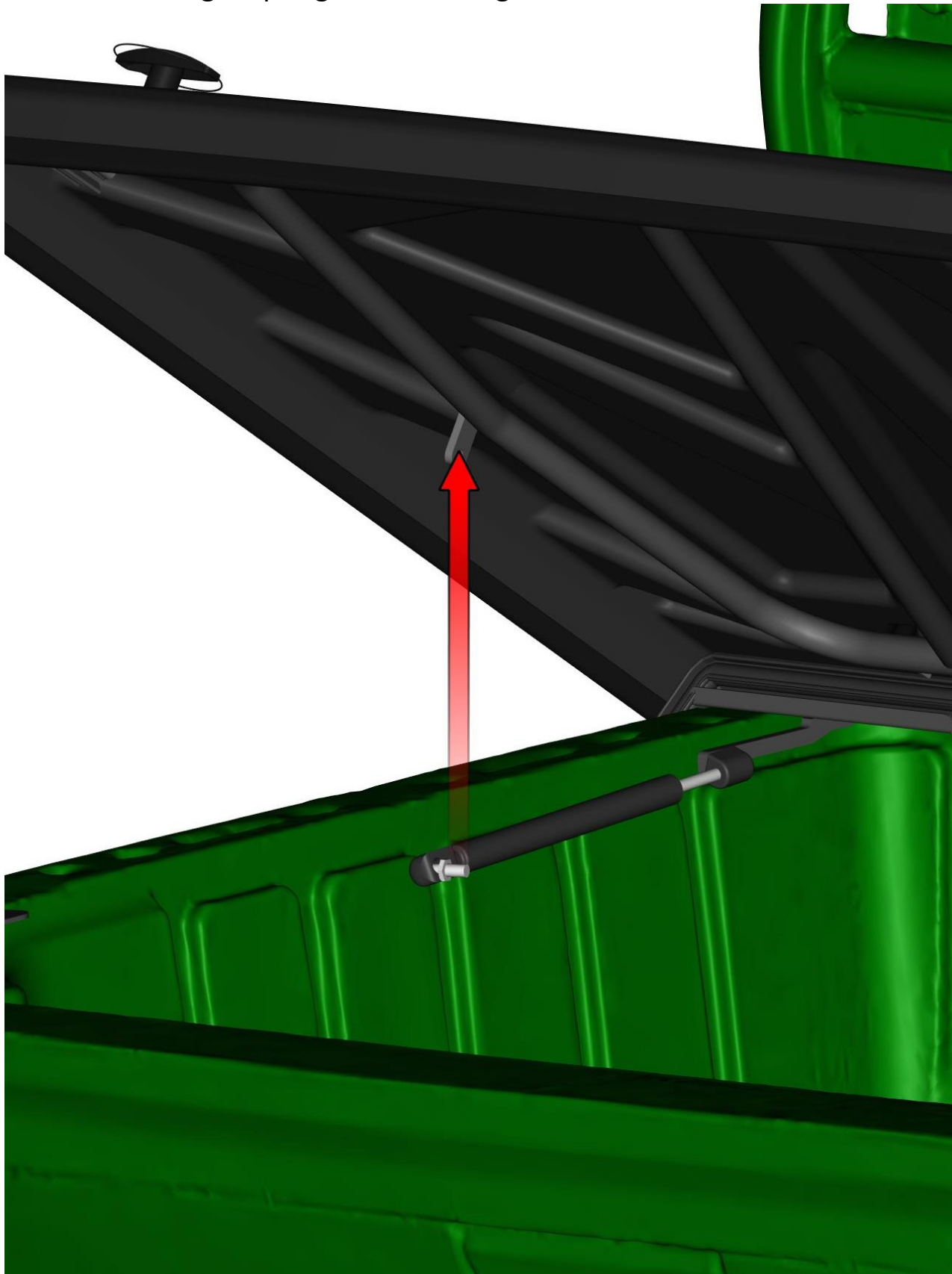


Fix both hinges with base assembly using included screws.



11

Mount gas spring onto the cargo bed cover on both sides.



BOLT TORQUE

BOLT TORQUE SPECIFICATIONS

GENERAL TORQUE SPECIFICATION TABLE

Use the following torques when special torques are not given. These values apply to fasteners as received from suppliers, dry, or when lubricated with normal engine oil. They do not apply if special graphited or moly disulphide greases or other extreme pressure lubricants are used. This applies to both UNF and UNC threads. Remember to always use grade five or better when replacing bolts.

IMPORTANT: On all PLATED GRADE 8 bolts, reduce torque 15% from listed bolt torque specification.

| SAE Grade No. | | 2 | | | | 5 | | | | 8* | | | |
|--|-------------|-------------|------|---------------|------|-------------|------|---------------|------|-------------|------|---------------|------|
| Bolt head identification mark as per grade. NOTE: Manufacturing Marks Will Vary | | | | | | | | | | | | | |
| | | TORQUE | | TORQUE | | TORQUE | | TORQUE | | TORQUE | | TORQUE | |
| Bolt Size | | Pounds Feet | | Newton-Meters | | Pounds Feet | | Newton-Meters | | Pounds Feet | | Newton-Meters | |
| Inches | Millimeters | Min. | Max. | Min. | Max. | Min. | Max. | Min. | Max. | Min. | Max. | Min. | Max. |
| 1/4 | 6.35 | 5 | 6 | 7 | 8 | 9 | 11 | 12 | 15 | 12 | 15 | 16 | 20 |
| 5/16 | 7.94 | 10 | 12 | 14 | 16 | 17 | 20.5 | 23 | 28 | 24 | 29 | 33 | 39 |
| 3/8 | 9.53 | 20 | 23 | 27 | 31 | 35 | 42 | 48 | 57 | 45 | 54 | 61 | 73 |
| 7/16 | 11.11 | 30 | 35 | 41 | 47 | 54 | 64 | 73 | 87 | 70 | 84 | 95 | 114 |
| 1/2 | 12.70 | 45 | 52 | 61 | 70 | 80 | 96 | 109 | 130 | 110 | 132 | 149 | 179 |
| 9/16 | 14.29 | 65 | 75 | 88 | 102 | 110 | 132 | 149 | 179 | 160 | 192 | 217 | 260 |
| 5/8 | 15.88 | 95 | 105 | 129 | 142 | 150 | 180 | 203 | 244 | 220 | 264 | 298 | 358 |
| 3/4 | 19.05 | 150 | 185 | 203 | 251 | 270 | 324 | 366 | 439 | 380 | 456 | 515 | 618 |
| 7/8 | 22.23 | 160 | 200 | 217 | 271 | 400 | 480 | 542 | 651 | 600 | 720 | 814 | 976 |
| 1 | 25.40 | 250 | 300 | 339 | 406 | 580 | 696 | 787 | 944 | 900 | 1080 | 1220 | 1464 |
| 1-1/8 | 25.58 | - | - | - | - | 800 | 880 | 1085 | 1193 | 1280 | 1440 | 1736 | 1953 |
| 1-1/4 | 31.75 | - | - | - | - | 1120 | 1240 | 1519 | 1681 | 1820 | 2000 | 2468 | 2712 |
| 1-3/8 | 34.93 | - | - | - | - | 1460 | 1680 | 1980 | 2278 | 2380 | 2720 | 3227 | 3688 |
| 1-1/2 | 38.10 | - | - | - | - | 1940 | 2200 | 2631 | 2983 | 3160 | 3560 | 4285 | 4827 |

*Thick Nuts must be used with Grade 8 bolts

METRIC BOLT TORQUE SPECIFICATIONS

| Size of Screw | Property Class | Course Thread | | | Fine Thread | | |
|---------------|----------------|---------------|-------------|---------------|-------------|-------------|---------------|
| | | Pitch (mm) | Pounds Feet | Newton-Meters | Pitch (mm) | Pounds Feet | Newton-Meters |
| M6 | 5.6 | 1.0 | 3.6-5.8 | 4.9-7.9 | - | - | - |
| | 8.8 | | 5.8-9.4 | 7.9-12.7 | | - | - |
| | 10.9 | | 7.2-10 | 9.8-13.6 | | - | - |
| M8 | 5.6 | 1.25 | 7.2-14 | 9.8-19 | 1.0 | 12-17 | 16.3-23 |
| | 8.8 | | 17-22 | 23-29.8 | | 19-27 | 25.7-36.6 |
| | 10.9 | | 20-26 | 27.1-35.2 | | 22-31 | 29.8-42 |
| M10 | 5.6 | 1.5 | 20-25 | 27.1-33.9 | 1.25 | 20-29 | 27.1-39.3 |
| | 8.8 | | 34-40 | 46.1-54.2 | | 35-47 | 47.4-63.7 |
| | 10.9 | | 38-46 | 51.5-62.3 | | 40-52 | 54.2-70.5 |
| M12 | 5.6 | 1.75 | 28-34 | 37.9-46.1 | 1.25 | 31-41 | 42-55.6 |
| | 8.8 | | 51-59 | 69.1-79.9 | | 55-68 | 75.9-92.1 |
| | 10.9 | | 57-66 | 77.2-89.4 | | 62-75 | 84-101.6 |
| M14 | 5.6 | 2.0 | 49-56 | 66.4-75.9 | 1.5 | 52-64 | 70.5-86.7 |
| | 8.8 | | 81-93 | 109.8-126 | | 90-106 | 122-143.6 |
| | 10.9 | | 96-109 | 130.1-147.7 | | 107-124 | 145-168 |
| M16 | 5.6 | 2.0 | 67-77 | 90.8-104.3 | 1.5 | 69-83 | 93.6-112.5 |
| | 8.8 | | 116-130 | 157.2-176.2 | | 120-138 | 162.6-187 |
| | 10.9 | | 129-145 | 174.8-196.5 | | 140-158 | 189.7-214.1 |
| M18 | 5.6 | 2.0 | 88-100 | 119.2-136 | 1.5 | 100-117 | 136-158.5 |
| | 8.8 | | 150-168 | 203.3-227.6 | | 177-199 | 239.8-269.6 |
| | 10.9 | | 175-194 | 237.1-262.9 | | 202-231 | 273.7-313 |
| M20 | 5.6 | 2.5 | 108-130 | 146.3-176.2 | 1.5 | 132-150 | 178.9-203.3 |
| | 8.8 | | 186-205 | 252-277.8 | | 206-242 | 279.1-327.9 |
| | 10.9 | | 213-249 | 288.6-337.4 | | 246-289 | 333.3-391.6 |



Declaration of Conformity



DFK Cab, s.r.o.

Za Olšávkou 391

686 01 Uherské Hradiště

Česká republika / Czech Republic